

Svensk Plaståtervinning



Mattias Philipsson

CEO Svensk Plaståtervinning
The Delegation for circular economy



Vinnare av Dagens Industris
Årets impactbolag 2022



Circularity - next manufacturing challenges:

How we solve the plastic recycling paradox

Svensk Plaståtervinning

2018

Established

80

Number
of employees

1 billion

Revenue 2022

8 500

Swedish business
customers

2022

Impact-Gazelle of the
year
(Dagens industri)



Headquarter and sorting and
recycling facility in Motala



Recycling targets **within** the EU

50% of the plastic packaging placed on the market must be recycled by 2025

55% of the plastic packaging placed on the market must be recycled by 2030



New EU-legislation starting 2030

PPWR: Proposal that every plastic packaging should contain recycled plastic raw material

Packaging with food contact:



10%

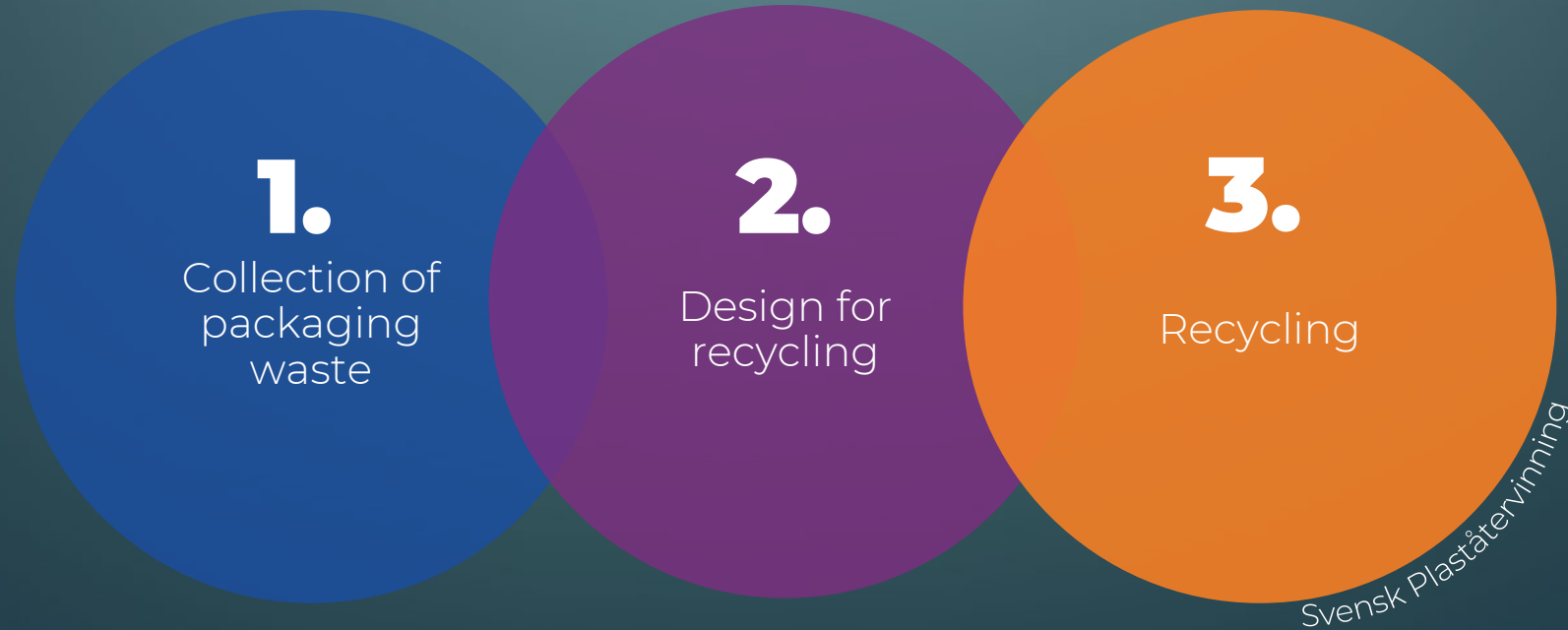
Other packaging:



35%

How do we make plastic packaging part of the circular economy?

And why don't we recycle more today?





**There is a difference between
recycling and **recycling**...**

Recycling \neq circular economy

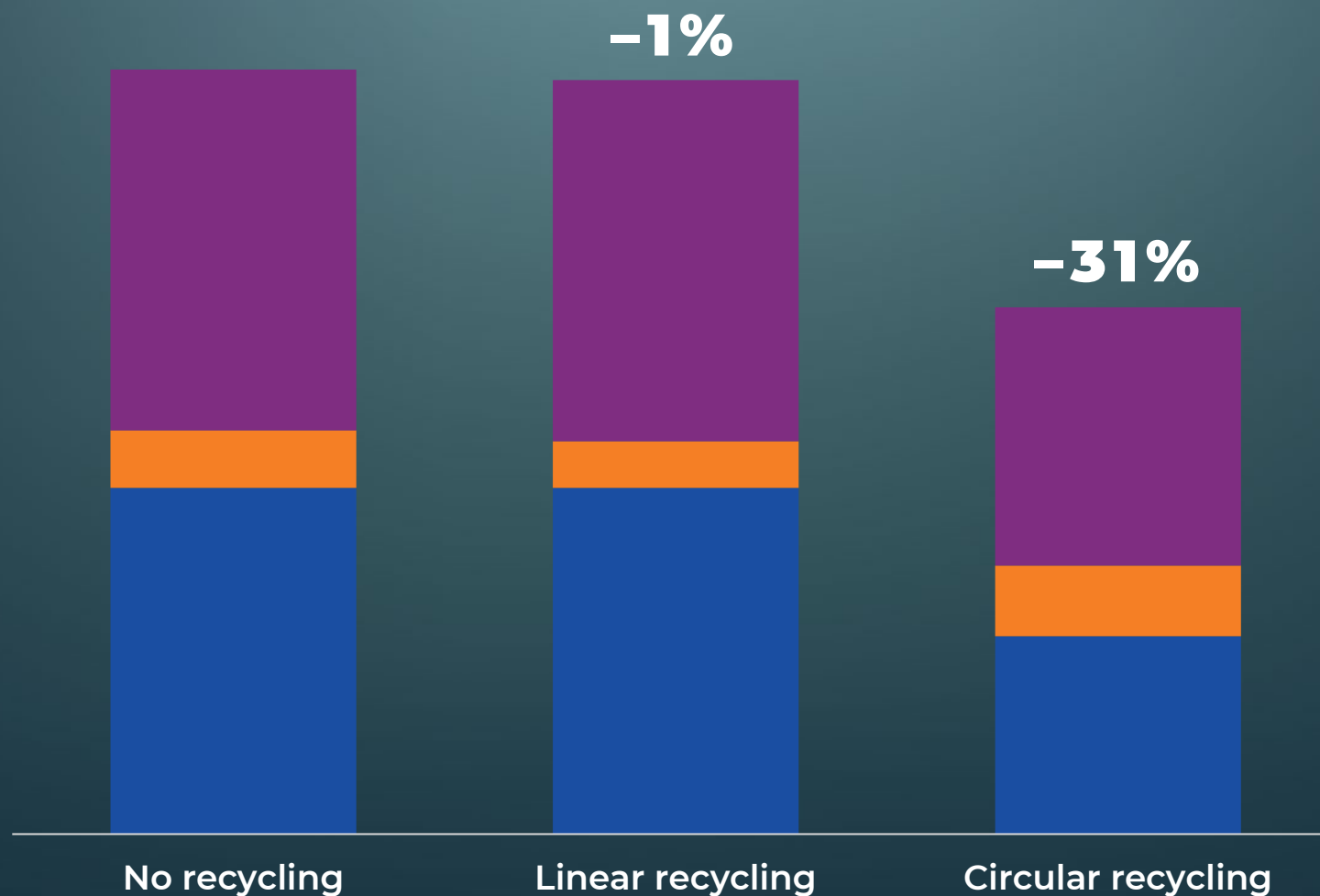




Scenario comparison

(kg CO₂e/kg plastic, IVL/Chalmers 2023)

- Incineration
- Collection + recycling
- Production of virgin material



Site Zero

Circular recycling

The world's largest and most efficient sorting and recycling facility for circular plastic recycling

Inauguration
autumn 2023

Each type of plastic is sorted and recycled separately to be able to become new packaging of the same type

Site Zero

Circular recycling

Phase 1: 2023

Sorting of 12 plastic types:

- Rigid PP
- Rigid HDPE
- Flexibel PE
- Flexibel PP
- PET-bottles (transp)
- PET-bottles (colored)
- PET-trays (transp)
- PS
- EPS
- PVC
- 2 Polyolefin-mixes, metal and rejects

Granulates for composite-products

Site Zero

Circular recycling

Phase 2: ~2026-27

Chemical
recycling of
laminates

Washing/
granulates on
site

Energy-
recovery with
CCS/CCU

Solar power

Svensk
Plaståtervinning



What happens to the packaging?

Detergent bottle?



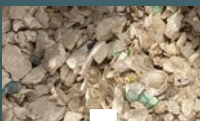
Ice cream tub?



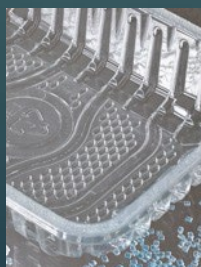
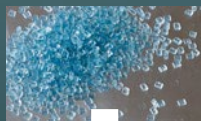
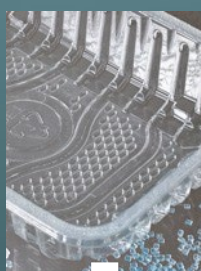
Transparent PET bottles?



Styrofoam packaging?



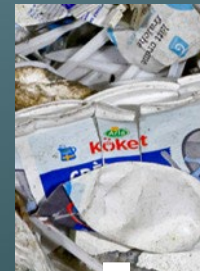
Meat tray?



Colored PET bottles?



Creme fraiche packaging?



Pasta bag?



Bread bag?





THANK YOU!